

## Park Permits

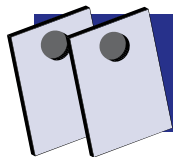
If you are planning an event in a park in Oak Park, you may need to secure a park permit in order to proceed with your event. Certain activities that require a permit include, but are not limited to:

- gatherings/events with 12 or more participants
- professional filming or photography
- use of any amplified sound, including microphones or radios
- bringing outside equipment into a park
- food or merchandise sales or sampling
- events requiring a specific location within a park

To apply for a permit or determine if your activity requires a permit, please visit [www.oakparkparks.com/parkpermits.htm](http://www.oakparkparks.com/parkpermits.htm). Fill out the appropriate permit request and submit it to the Park District at least 3 weeks prior to the proposed activity.

### Taylor Park Picnic Permits

Starting April 1, 2009, the Taylor Park Picnic Area is available to be permitted between the dates of May 1 through October 15. Groups may barbecue in the Taylor Park Picnic Area. A picnic permit is \$25 for residents and \$40 for non-residents. Residents may be required to show proof of residency before a permit will be issued. Times available: 10am-3pm or 4pm to Dusk  
Dates available: May 1-Oct 15  
Fee: \$25/\$40



## Picnic Fun: Baggo Games for Rent!

Are you having a picnic, a block party, a barbecue or just some friends over for the day? The Park District has the activity for you. Rent a set of Bag Toss boards and join the growing community playing this great block party game. Call the Park District at (708) 383-0002 at least one week in advance to check availability and reserve your boards. Boards must be picked up the day before (or Friday) and returned the day after (or Monday) your event. There is a \$100 deposit that will be returned to you once the equipment is returned and in satisfactory condition.  
Dates Available: May 30 - Sep 28  
Fee: \$25 per set

## Splash Pads

Splash Pads are located at Andersen Park, Field Park, Fox Park and Longfellow Park. Splash pad hours are 10am to 8pm, Memorial Day through Labor Day.

At Longfellow Park, water wheelchairs are available for splash pad use. For more information, please call the facility rental hotline at (708) 725-2722.

# Important Information



## Facility Rentals Information

The Park District of Oak Park offers a variety of venues for your special occasions. Among them are Cheney Mansion, Historic Pleasant Home and the Oak Park Conservatory, which are unique historic properties well-suited for weddings, showers and corporate functions. Our recreation centers, located throughout the community, are great settings for birthday parties, showers and other family gatherings. Please use the contact information below for more information on specific facility rentals. For information on renting outdoor spaces, please see Park Permits at right.

Cheney Mansion  
Linda Peterson (708) 383-2612

Historic Pleasant Home  
Georgia Braun (708) 383-2654

Oak Park Conservatory  
Henrietta Yardley (708) 725-2450

Ridgeland Common  
Jenny Berni (708) 725-2301

*Ice Arena (in season)*  
Trina Hartzog (708) 848-9661 ext. 2519  
*Birthday Parties/Comstock Room*

Active Sport Area & 49 Lake Teen Center  
Ezohn Smith (708) 725-2110

Community Centers  
Rental Hotline (708) 725-2722  
*Andersen Center Field Center*  
*Barrie Center Fox Center*  
*Carroll Center Longfellow Center*  
*Stevenson Center*

**Rental Requests for the community centers must be made a minimum of 3 weeks prior to the rental date.**

## Special Sport Facilities

Please note that the Sport Courts at Barrie, Longfellow and Stevenson Parks may be closed due to inclement weather, special events, program classes or for facility rentals. For the status of these special facilities, please contact the centers directly: Barrie Center (708) 383-6905, Longfellow Center at (708) 383-6909 or Stevenson Center (708) 383-6910. All facilities will be closed on Labor Day. Hours listed below are fall hours - see the summer brochure for summer hours.

### Active Sport Area (ASA) at Stevenson Center

Fall hours for the Stevenson Park ASA will begin Saturday, August 23. The ASA is scheduled to be open through November 26, weather permitting. Located at Stevenson Park, the Active Sport Area (ASA) features a 12,000 square foot skate park and 3 half-court basketball courts. The ASA is free to the public. Helmets must be worn at all times in the skate park and bikes are not allowed.

#### Fall Schedule:

M-Tu: 3:30-8pm  
W: 3:30-6pm  
Th-F: 3:30-8pm  
Sa-Su: Noon-8pm

### Longfellow Center Basketball Courts

Park District supervision will be provided when the courts are in operation (hours below).

#### Fall Schedule runs Aug 24 - Nov 1

M, Th, F from 3-6pm  
Sa & Su from 1-6pm

### Barrie Park Sport Courts

The Barrie Park Sport Courts are a self contained area at Barrie Center with a unique all-weather surface designed to facilitate various sports (basketball, volleyball, tennis and in-line hockey).

#### Fall Schedule runs Aug 24 - Nov 1 Open Tu, W & F from 4-7pm

##### First Week of the month

North Court: Tennis  
South Court: Basketball

##### Second Week of the month

North Court: Volleyball  
South Court: Basketball

##### Third Week of the month

North Court: In-Line Skating  
South Court: Basketball

##### Fourth Week of the month

North Court: Basketball  
South Court: Basketball

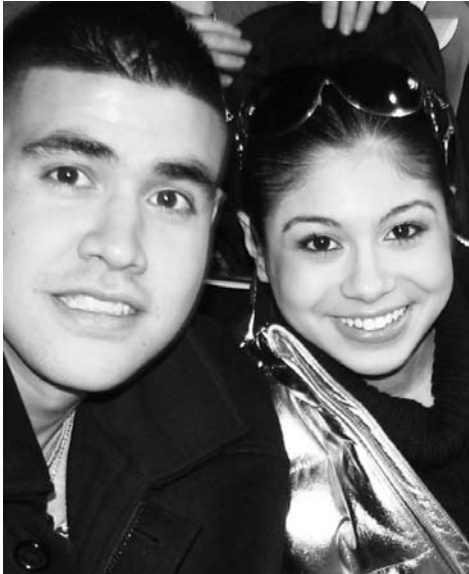
##### Fifth Week of the month

North Court: Tennis  
South Court: Basketball



# Important Information

## PLEASE NOTE



### Say Cheese!

On occasion, Park District staff may take photos of participants enrolled in Park District programs, classes, events, or people enjoying our parks. Please be aware that these photos are for Park District use only and may be used in future publications and on the Park District web sites.

### No Smoking

According to Park District Ordinance 7.22, no smoking of any kind (cigarettes, cigars, pipes, or other tobacco products) is allowed on Park District property. Thank you for cooperating.

### No Bike Riding

No person 15 years of age or older may ride a bike within any park property. This revised rule was adopted by the Park Board of Commissioners with the safety of all park patrons in mind. This ordinance mirrors the Village of Oak Park ordinance regarding bicycles on sidewalks.

### No private tennis lessons allowed on Park District tennis courts at any time.

According to Park District Ordinance, no person shall conduct any private instruction, lesson, or class in any Park Facility at any time except as previously approved by the Park District.

## Dogs in Our Parks

For the safety of our patrons, dogs are not allowed in Park District playgrounds but are allowed in our parks as long as they are on a leash which is no longer than 8 feet at all times. Another alternative for your four-legged friend is to purchase a permit for the Park District's Dog Park and Dog Park Plus, located at Ridgeland Common Park. (see information below).

### Dog Park & Dog Park Plus

#### Permit Required for access - limited permits available

Our four-legged canine friends have a designated place to run, roll around, meet new friends and even catch a ball or Frisbee here at the Park District of Oak Park. Opened in January 2006, the Park District's Dog Park and Dog Park Plus, located in Ridgeland Common Park, offers Oak Park dog owners the opportunity to bring their dogs to an open space and allow them to exercise off-leash. The Dog Park is a dedicated dog off-leash area located in the southeast corner of Ridgeland Common Park, in an area that covers approximately 8,700 square feet. Dog Park Plus encompasses the Dog Park as well as the fenced-in area of Ridgeland Common including the two ball fields and the sled hill. This is a multi-use area and is only available for off-leash exercise during select hours.

#### Dog Park Hours:

Daily from Sunrise to Sunset

#### Dog Park Plus Hours:

Nov 1 - Mar 31: Saturdays, Sundays and National Holidays from 7-9am

Apr 1 - Oct 31: Saturdays, Sundays and National Holidays from 6- 8am



#### 2009-2010 Permits

##### Valid August 1, 2009 - July 31, 2010

On sale beginning August 1, 2009. The cost for a permit is \$40 for the first dog registered, and \$5 for each additional dog thereafter, with a limit of three dogs per household (in keeping with Village restrictions on dog ownership). Permits are valid for one year from August 1, 2009 – July 31, 2010. See "How To Obtain A Permit" below for more information.

#### How To Obtain A Permit

Permits are available for purchase by Oak Park residents only and must be purchased IN-PERSON ONLY at Ridgeland Common, located at 415 W. Lake Street in Oak Park (office hours 9am-5pm M-F, and Sa from 9am-Noon).

#### Requirements for Permit

Owners must provide a valid village dog license receipt, including the license number, and proof of current vaccinations for rabies, distemper, kennel cough/bordetella, para-influenza and parvovirus, as well as proof of a fecal test for internal parasites.

#### Please Note

Periodic monitoring and surveillance of the Dog Park/ Dog Park Plus will be conducted by the Village of Oak Park Animal Control Officer and the Village of Oak Park Police. Dog owners not complying with posted Dog Park/Dog Park Plus rules will be subject to fines of up to \$1,000.

**Questions on Dog Permits? Please call (708) 848-9661 M-Sa, 9am-5pm.**

## Join the GREEN TEAM

If you are interested in helping to care for a local park, we need you for the Park District Green Team, an initiative of the Park District's newly organized Greening Advisory Committee. Green Team members, under the guidance of volunteer park stewards, will donate a few hours per month to monitor and maintain biodiverse areas, monitor trees, remove invasive species from naturalized areas and help ensure green operations on all of our park lands while improving the overall quality of our parks. Interested steward candidates should have a working knowledge of or interest in horticultural practices which might include gardening, prairie restoration and perennial plant and tree care. For more details contact Henrietta Yardley at 708.725.2450 or henriettay@oakparkparks.com. Applications are available at [www.oakparkparks.com](http://www.oakparkparks.com).



FOR OUR PARKS. FOR OUR PLANET.