

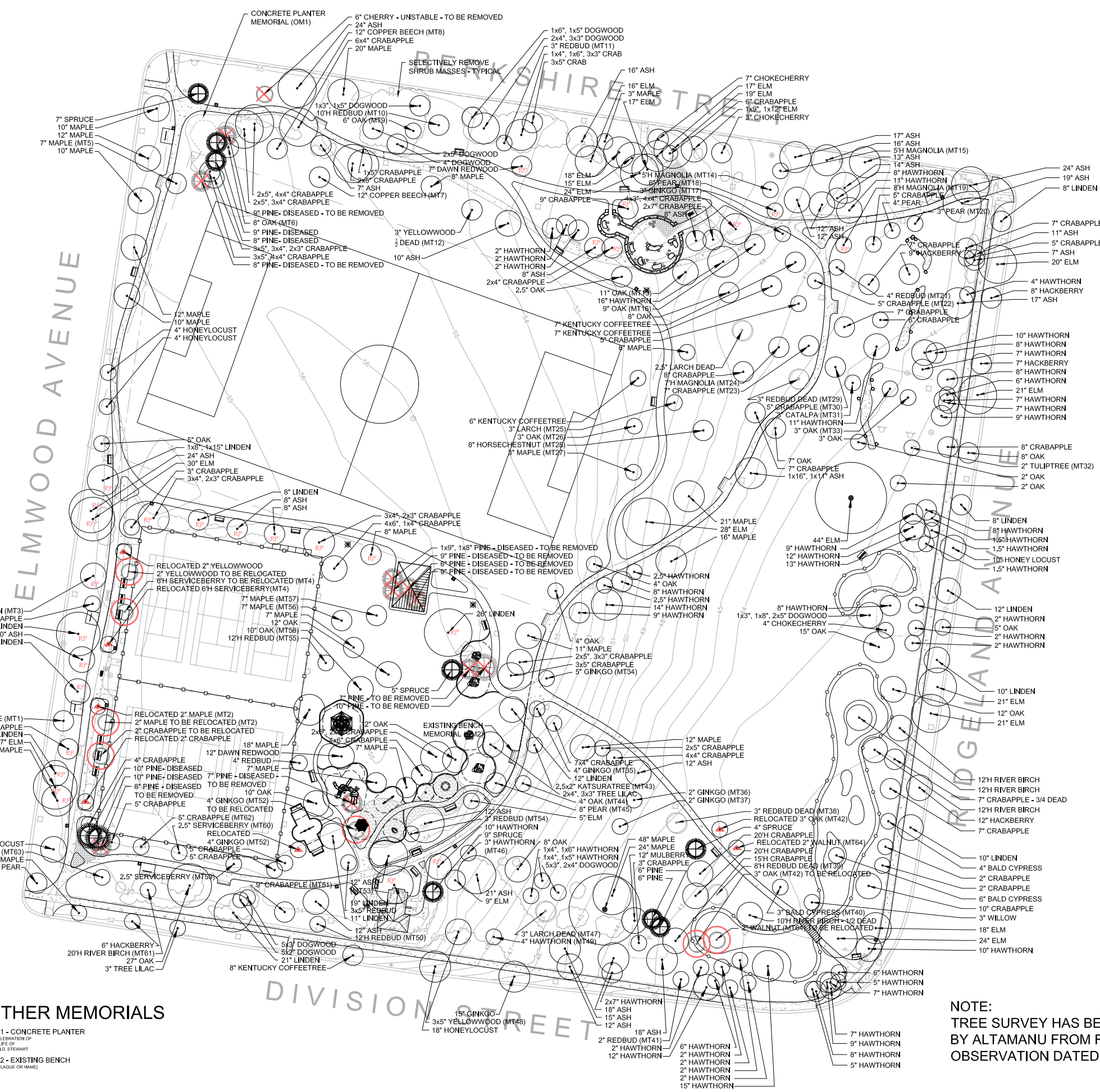
MEMORIAL TREES

- MT1 - 2.5" TULIPTREE**
SUZANNE GUERIN
1962-2003
SHE BRIGHTENED
EACH DAY
- MT2 - 2" MAPLE**
EDWARD & EVELYN
GUERIN
TOGETHER IN HEAVEN
UPPERMERCYS
- MT3 - 10" LINDEN**
DEDICATED TO THE LIVING MEMORY OF
DR. JIMMIE & FRANCES L. SEED
WHOSE HOME OVERLOOKED THIS PARK
FOR MORE THAN FIFTY YEARS AND
WHOSE FOUR CHILDREN PLAYED HERE
- MT4 - 6H SERVICEBERRY**
IN HONOR OF THE
BIRTH OF
ANNE CRAGAN
WOLLMUTH
11/30/01
- MT5 - 7" MAPLE**
MEMORY OF
DECEASED MEMBERS
GARDEN CLUB OF
O.P.A.F.
1996
- MT6 - 8" OAK**
FRANCIS L. ROACH
1908-1988
"HOPE IS THAT THING WITH FEATHERS
THAT PERCHES IN THE SOUL AND
SINGS THE TUNE - WITHOUT WORDS --
AND NEVER STOPS AT ALL"
- MT7 - 12" BEECH**
DEDICATED TO
LORRAINE KOZACK
THANK YOU, SIBL
- MT8 - 12" BEECH**
TO OUR GRANDPARENTS
IN HEAVEN
LOVE, TONY & JIMMY
FRANKER
- MT9 - 6" OAK**
HONORING THE
BERGS, SOLES
WILSON & PAINES
- MT10 - 10H REDBUD**
REMEMBERING WITH LOVE
"ALWAYS"
DAVID J. NOLAN
1907-1991
- MT11 - 10H REDBUD**
JOYCE HELLEDY
CALLAHAN
NURTURER OF GARDENS
AND SOULS
- MT12 - 3" YELLOWWOOD**
IN LIVING MEMORY
OF
LAURELLE DONATI
- MT13 - 11" OAK**
IN LIVING MEMORY
WILLIAM FRANCIS
GILMORE
1933-1996
- MT14 - 5H MAGNOLIA**
IN REMEMBRANCE
PHOEBE MARIE
ELBERT
1915-1995
- MT15 - 5H MAGNOLIA**
IN LIVING MEMORY
OF
NELL & AUGIE
SIBCO
- MT16 - 9" OAK**
IN LIVING MEMORY
IRENE JOHNSON STEIN
1923-1988
- MT17 - 3" GINKGO**
IN LIVING MEMORY
OF
FLEMIE AND RENE
WYBES
- MT18 - 6" PEAR**
ALIVING TRIBUTE
TO
RICHARD G. TOMASO
OUR "GIVING TREE"
1938-1993
- MT19 - 8H MAGNOLIA**
JOE MICHELOTTI
MRS. YOU
LOVE YOU ALWAYS
PAULINE
- MT20 - 3" PEAR**
MARCUS T.
MILLER, JR.
8/24/21 - 5/26/21
WE LOVE YOU
- MT21 - 4" REDBUD**
OUR BABY ANGEL
REBECCA JEAN
WILLIAMS
MARK 10/13-16
- MT22 - 5" CRABAPPLE**
WISH YOU WERE HERE
DONALD D. CAMERON
1977
- MT23 - 7" CRABAPPLE**
BILL MAYHEW
HAD GREAT MOMENTS IN
THIS FIELD OF DREAMS
1992-1991
- MT24 - 7H MAGNOLIA**
IN LIVING MEMORY OF
NANCY P. MARTINEZ
4-4-89 - 1-3-90
- MT25 - 3" LARCH**
IN LIVING MEMORY
MARY T. MILEY &
GERTRUDE M.
YANISLEY
- MT26 - 3" OAK**
IN LIVING APPRECIATION
CORNELIUS J. WALSH
1906-1971
FROM HIS FAMILY
- MT27 - 3" MAPLE**
ANN RAPPTS
1920-2001
HOME SWEET THINGS
GREEN HILLS AND
RED GERANIUMS
FOREVER
- MT28 - 8" HORSECHESTNUT**
IN MEMORY OF
CLEMENT LEWENOWSKI
1926-1979
- MT29 - 3" ?**
KATHY LESNAK
1973-1999
SHE COULD SMILE
- MT30 - 5" CRABAPPLE**
IN MEMORIAM
HAL POWELL
1951-1998
- MT31 - 3" CATALPA**
FOR OUR FRIEND
ERIK COLE
8/7-2003
GO GATORS!
- MT32 - 2" TULIPTREE**
HONORING
NORM & BEV
VAN DERSEE
OF LUXEMBERG, VA.
2005

- MT33 - 3" OAK**
"YOU ARE THE SUNSHINE
OF OUR LIVES"
MOM & GRANDMA
MARY ANNE GLOVER
1928-2004
- MT34 - 5" GINKGO**
WAYNE GUNDERSON
UPPERMERCYS
FROM MARY, KENT & TED
- MT35 - 4" GINKGO**
FOR THE GIFT OF
LIFE AND LOVE
JUDY SOMBERG
1933-1995
- MT36 - 2" GINKGO**
OAK
JANINE
EXTRAORDINARY -
MY BEST FRIEND
- MT37 - 2" GINKGO**
FOR
AMANDA TERNA
PSALM 27:19
2004
- MT38 - 3" REDBUD**
MAYA VICTORIA
ALBERS
"WELCOME TO
OUR WORLD"
OCTOBER 11, 2002
- MT39 - 8H REDBUD**
JOHN G. KELEN
FOREVER LOVED
LEE
- MT40 - 3" BALD CYPRESS**
IN THE GROUP
& IN OUR HEARTS
FOREVER
JOHN RUSSELL
1982-2002
- MT41 - 12H REDBUD**
IN MEMORY OF
ROBERT HETSCH
O.P. RESIDENCE CORP.
2002
- MT42 - 3" OAK**
TIMOTHY SEAN
CARROLL
"AND LOVE WILL LIGHT THE WAY"
1970-2000
- MT43 - 2.5x2" KATSURATREE**
MARK N. GREEN
A SOARING SPIRIT
1949-2002
- MT44 - 4" OAK**
HERBERT E. JOHNSON
BELOVED
FATHER & GRANDFATHER
7-15-1928 - 7-9-2000
- MT45 - 8" PEAR**
IN MEMORY OF
DORIS ZICCAROLI
FROM
THE MORO FAMILY
1996
- MT46 - 3" HAWTHORN**
PSALM 136:13-18
BABY "MATT"
CULLISON
1959
- MT47 - 3" LARCH**
IN MEMORY OF
SCARLETT
FROM KENT, TED,
& SUSAN
- MT48 - 3x5" YELLOWWOOD**
WE LOVE
DYLAN HARRISON
SADON
1985-1997
- MT49 - 4" HAWTHORN**
HARLEY
1983-1987
OUR LOVE FOR YOU
WILL NEVER DIE
- MT50 - 12H REDBUD**
MARGARET WELDON
LOVE
YOUR 36 GRANDCHILDREN
JULY 2002
- MT51 - 9" CRABAPPLE**
ELIZABETH ANN
CALLAGHER
10/21/77 - 4/30/04
A LIVING
REMEMBRANCE FROM
YOUR GRANDSON
- MT52 - 4" GINKGO**
SONNETZ TWINS
"A MOMENT IN
OUR HEARTS
A LIFETIME
IN OUR HEARTS"
- MT53 - 12" ASH**
IN LIVING MEMORY
ROBERT CARSON
1982-1991
FROM YOUR CHILDREN
- MT54 - 3" REDBUD**
MARY G. SANDSTROM
1944-1996
A GIFT TO THE WORLD!
- MT55 - 12H REDBUD**
ELIZABETH GALLAGHER
I SHALL COME TO TAKE YOU WITH ME,
THAT WHERE I AM, YOU MAY ALSO BE.
- MT56 - 7" MAPLE**
JIM SUGRUE
HE BROUGHT US
LOVE AND LAUGHTER
1994
- MT57 - 7" MAPLE**
WITH LOVING THANKS
TO
EDWARD & MARY
SUGRUE
1994
- MT58 - 10" OAK**
CHELSEA ANN
"WITH US FOREVER"
12-1-90 - 3-15-92
- MT59 - 2.5" SERVICEBERRY**
IN LIVING MEMORY OF
DARLINE R. DOYLE
FROM
THE MORO FAMILY
1999
- MT60 - 2.5" SERVICEBERRY**
MEMORIAL
SHARON ANN KELLY
BENTONSON
1951-1993
- MT61 - 2.5" SERVICEBERRY**
JAMES G. MULLEN
"OUR ANGEL"
9-21-40 - 11-25-97
- MT62 - 5" CRABAPPLE**
CHUCK MERTZDITZ, SR.
1913-1997
A GOOD MAN NEVER DIES
- MT63 - 10H REDBUD**
IN MEMORY OF OUR MOM
EVA LUKAS
PAUL & TERRY
1925-1994
- MT64 - 2" WALNUT**
GABRIEL BECKER
GENUIN
JUNE 4, 2003
BORN INTO LOVE

OTHER MEMORIALS

- OM1 - CONCRETE PLANTER**
IN CELEBRATION OF
THE LIFE OF
GLEN D. STEWART
- OM2 - EXISTING BENCH**
(NO PLAQUE OR NAME)



TAYLOR PARK Oak Park, IL TREE PRESERVATION PLAN

Project: Taylor Park Tree Preservation Plan
Drawing: [Blank]

Legend:

- EXISTING DECIDUOUS TREE TO REMAIN
- EXISTING EVERGREEN TREE TO REMAIN
- EXISTING DEAD TREE (S)
- PROPOSED RELOCATION OF EXISTING TREE (R)
- EXISTING EVERGREEN TREE TO BE RELOCATED (R)
- EXISTING DECIDUOUS TREE TO BE RELOCATED (R)
- EXISTING TREE TO BE BURY PLANTED (P)
- NEW DECIDUOUS ORNAMENTAL TREE (O)
- NEW EVERGREEN TREE (T)

DRINKING FOUNTAIN
TRASH RECYCLING

DATE: 7.10.2008
DRAWN BY: MJ/JS
CHECKED BY: JB/JM
SCALE: 1" = 30'
Stamp: EXP 08.31.09

North

SCALE: 1" = 30'-0"

Sheet Number

NOTE:
TREE SURVEY HAS BEEN UPDATED
BY ALTAMANU FROM FIELD
OBSERVATION DATED JUNE 2008.

Taylor Park

Tree Calculation Spreadsheet

10-Jul-08



landscape: architecture + art + sculpture + urban design
1700 w. irving park road, suite 202, chicago, illinois 60613
773.528.7492 ph 773.305.0805 fax info@altamano.com



TREES TO BE REMOVED= 11 Trees

	Caliper	Tree
1	8"	Pine (Diseased)
2	7"	Pine (Diseased)
3	1x9"x1x8"	Pine (Diseased)
4	9"	Pine (Diseased)
5	6"	Pine (Diseased)
6	9"	Pine (Diseased)
7	7"	Pine (Diseased)
8	10"	Pine (Diseased)
9	6"	Cherry (Hazard)
10	8"	Pine (Diseased)
11	9"	Pine (Diseased)

Total Caliper Inch Removed 96"

RELOCATED TREES= 7 Trees

Caliper	Tree Type
2"	Yellowwood
2"	Serviceberry
2"	Maple
2"	Crabapple
4"	Ginkgo
3"	Oak
2"	Walnut

Total Caliper Inch Relocated 17"

PROPOSED TREES= 119 Trees

	Caliper	Tree Type
34	3"	Deciduous
68	3"	Ornamental
17	3"	Evergreen

Total Caliper Inch Proposed 357"