

SCHEMATIC DESIGN REVIEW

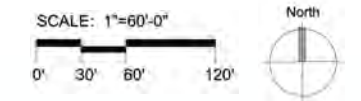
2 February 2012

RIDGELAND COMMON PARK DISTRICT OF OAK PARK

Altamanu, Inc.
LANDSCAPE ARCHITECTURE

Stantec
AQUATICS & ICE CONSULTANTS

nagle
hartray
|architecture

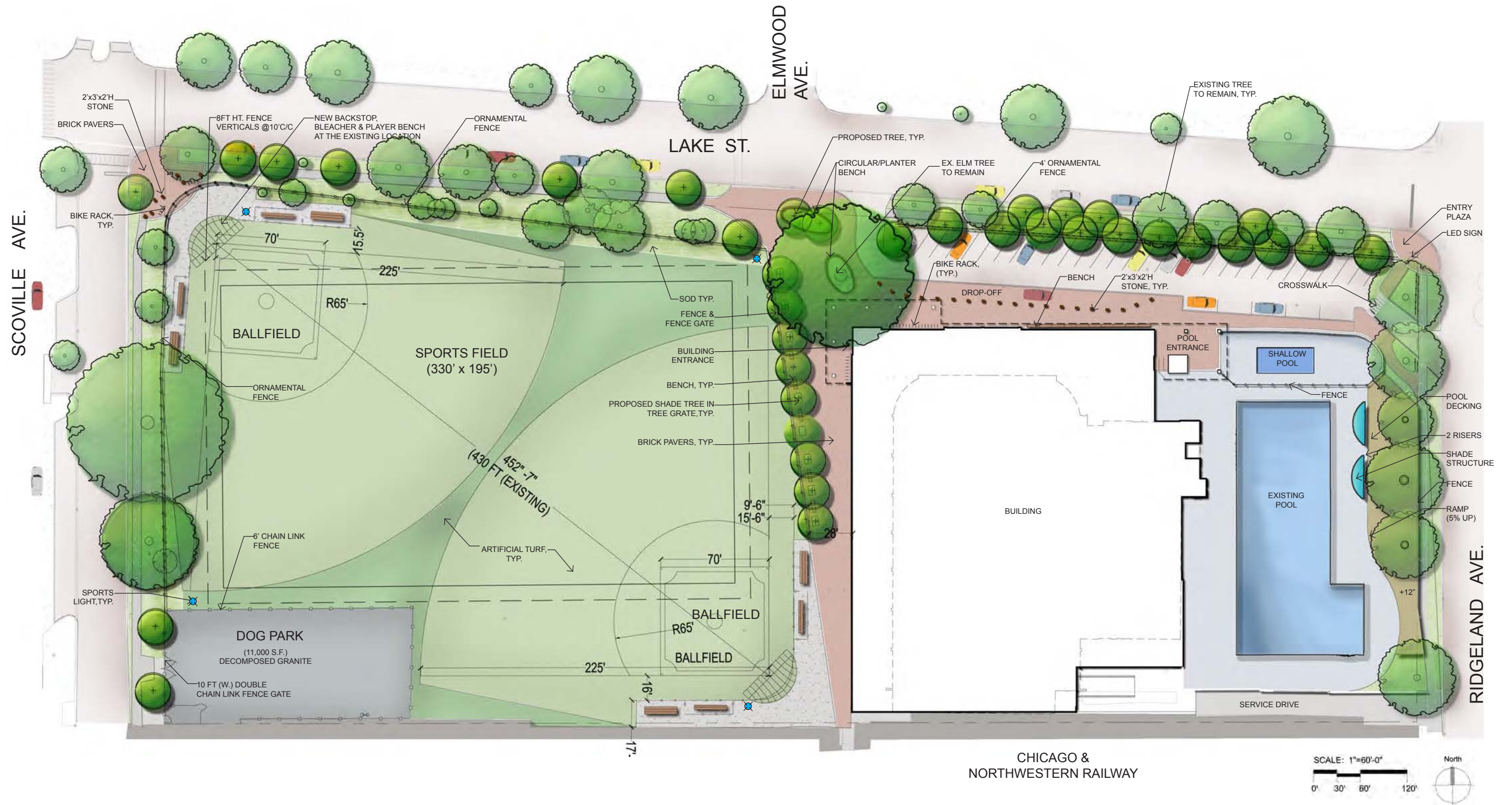


SITE PLAN—BASE BID

Altamanu, Inc.
 LANDSCAPE ARCHITECTURE

Stantec
 AQUATICS & ICE CONSULTANTS

nagle
 hartray
 architecture

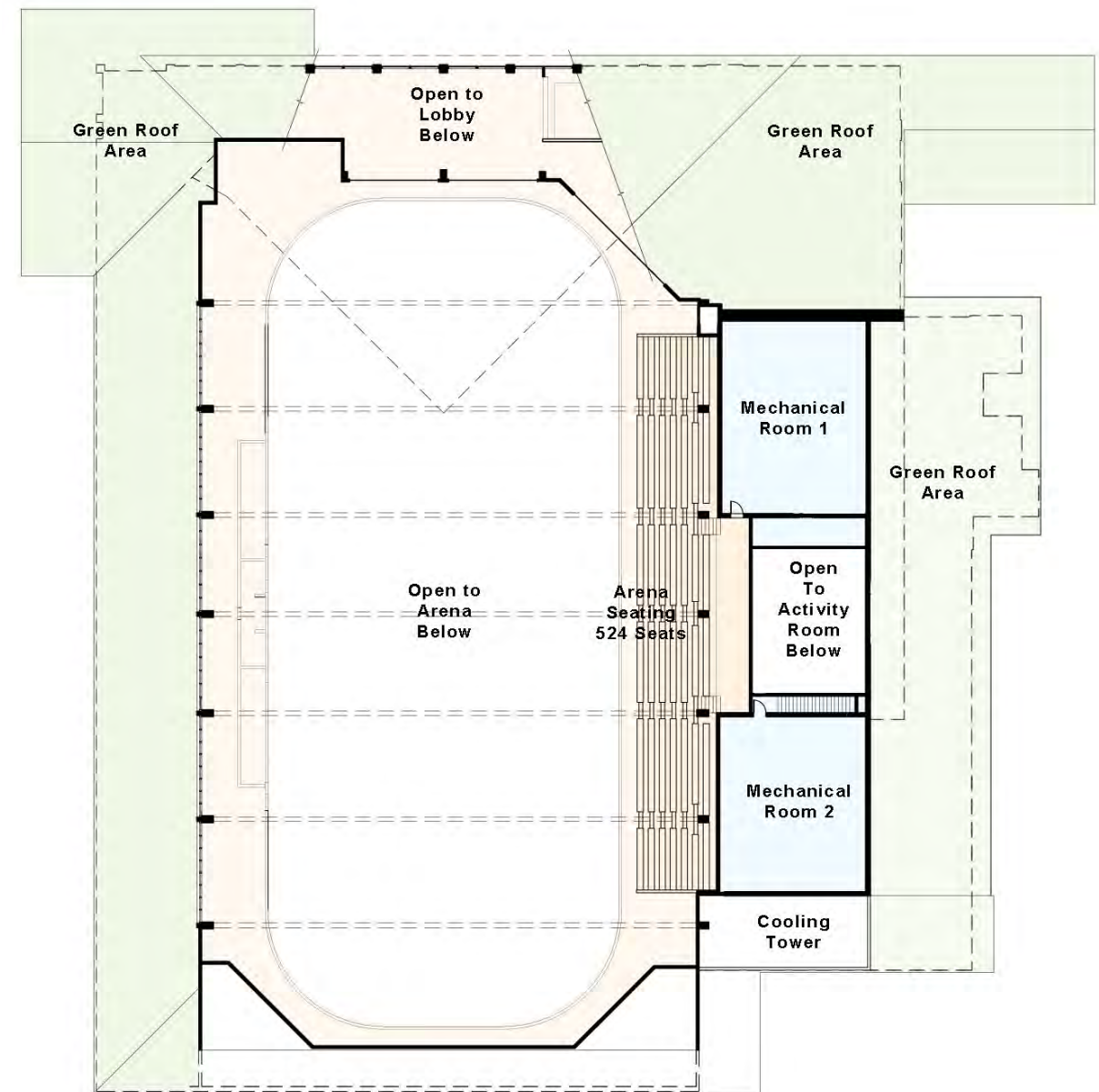
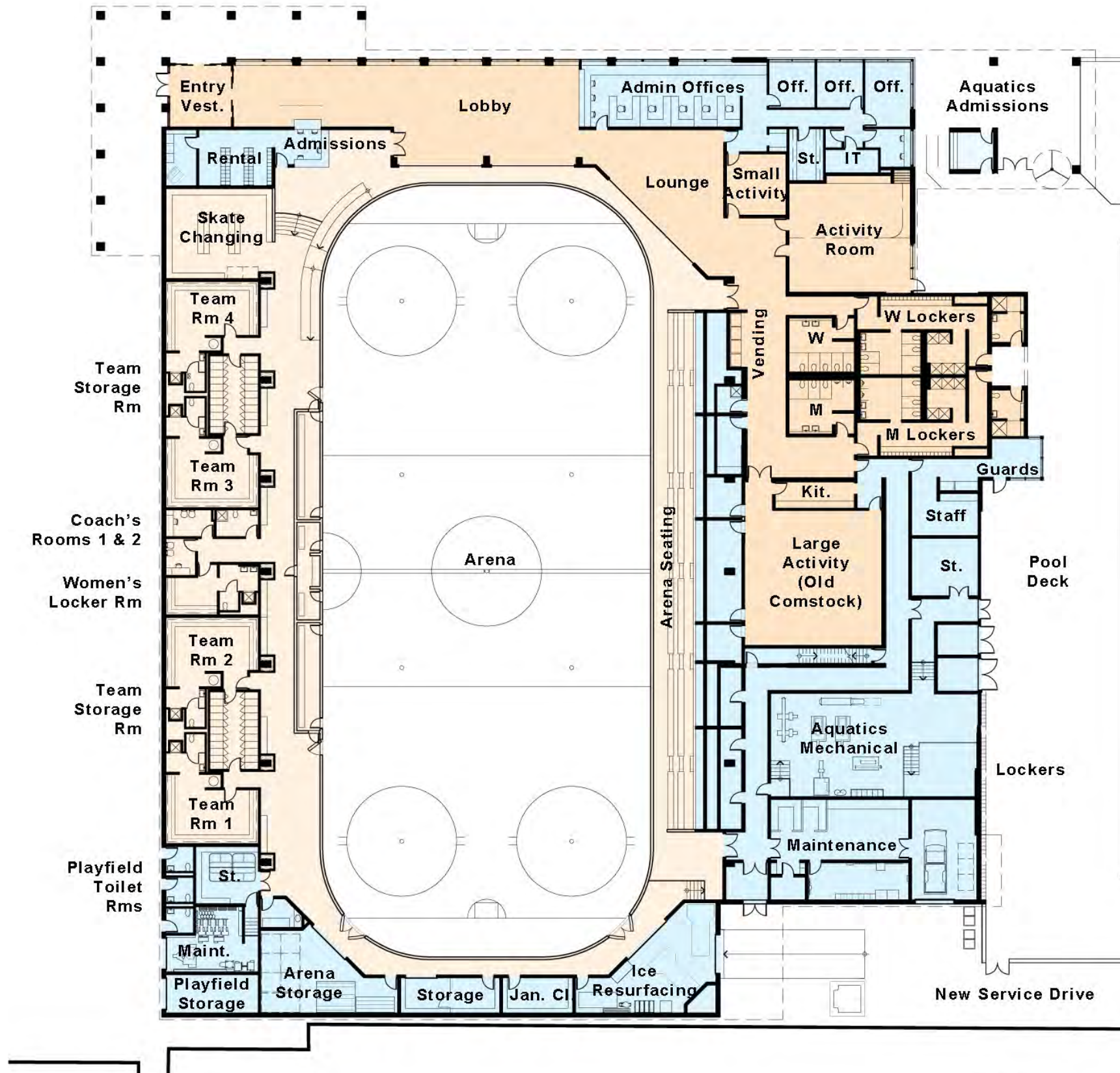


SITE PLAN—ALTERNATE BID OPTION 1

Altamanu, Inc.
LANDSCAPE ARCHITECTURE

Stantec
AQUATICS & ICE CONSULTANTS

**nagle
hartray**
architecture

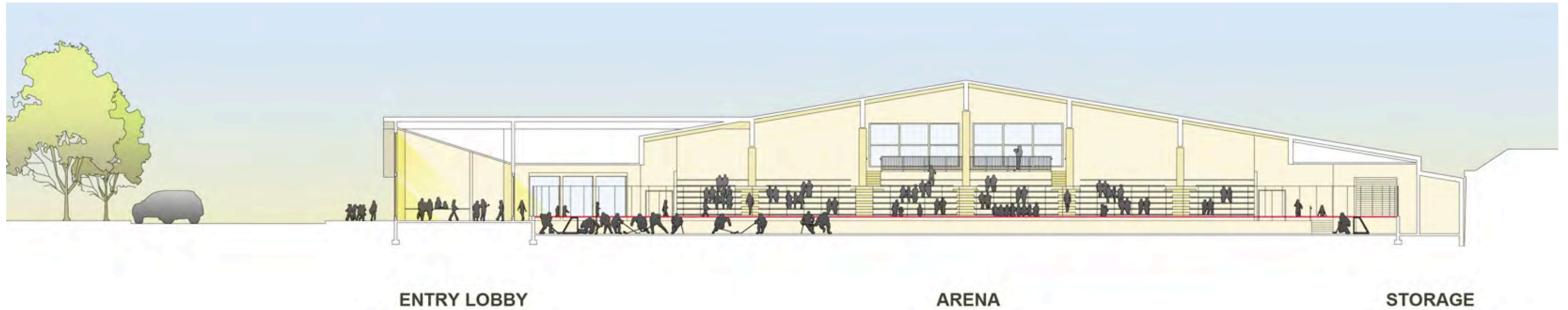


FLOOR PLANS

Altamanu, Inc.
LANDSCAPE ARCHITECTURE

Stantec
AQUATICS & ICE CONSULTANTS

nagle
hartray
architecture

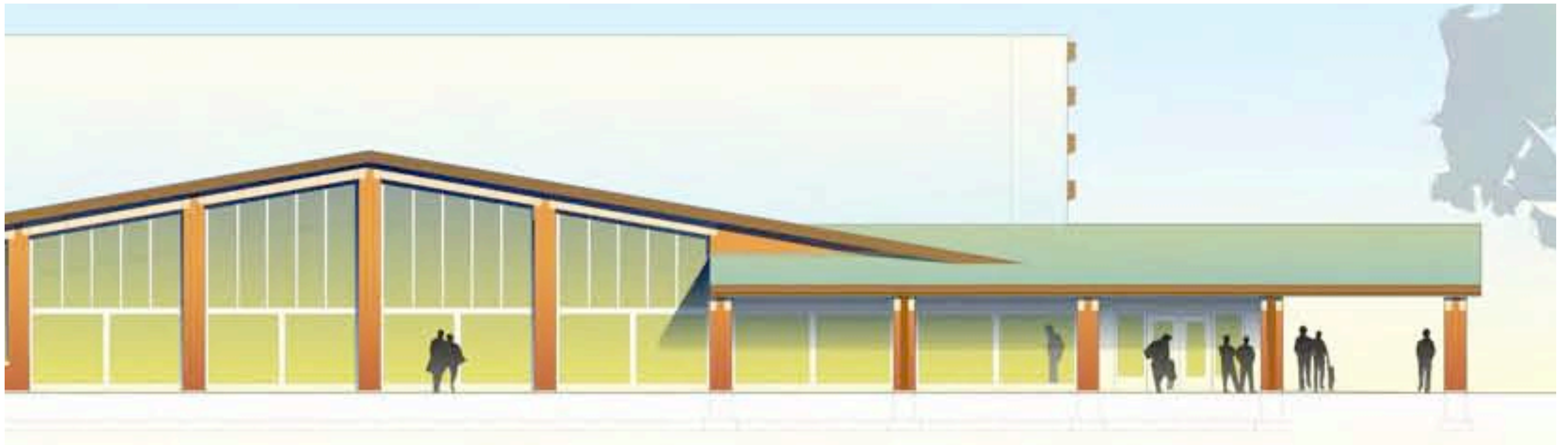
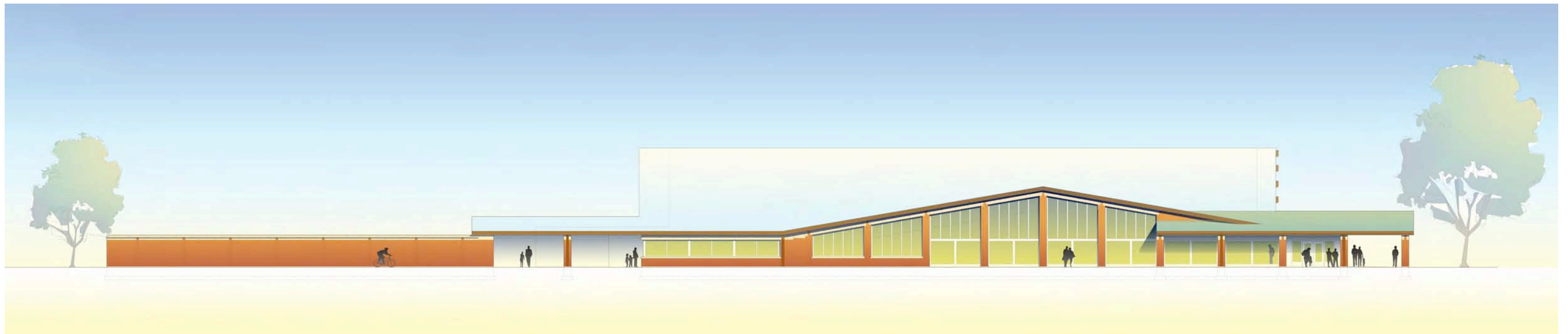


BUILDING SECTIONS

Altamanu, Inc.
 LANDSCAPE ARCHITECTURE

Stantec
 AQUATICS & ICE CONSULTANTS

**nagle
 hartray**
 architecture

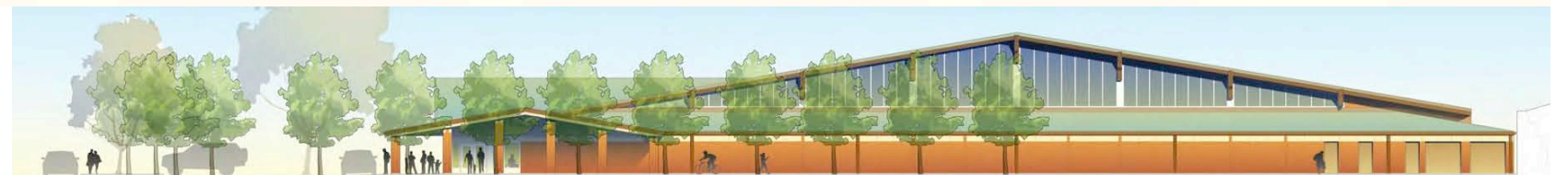
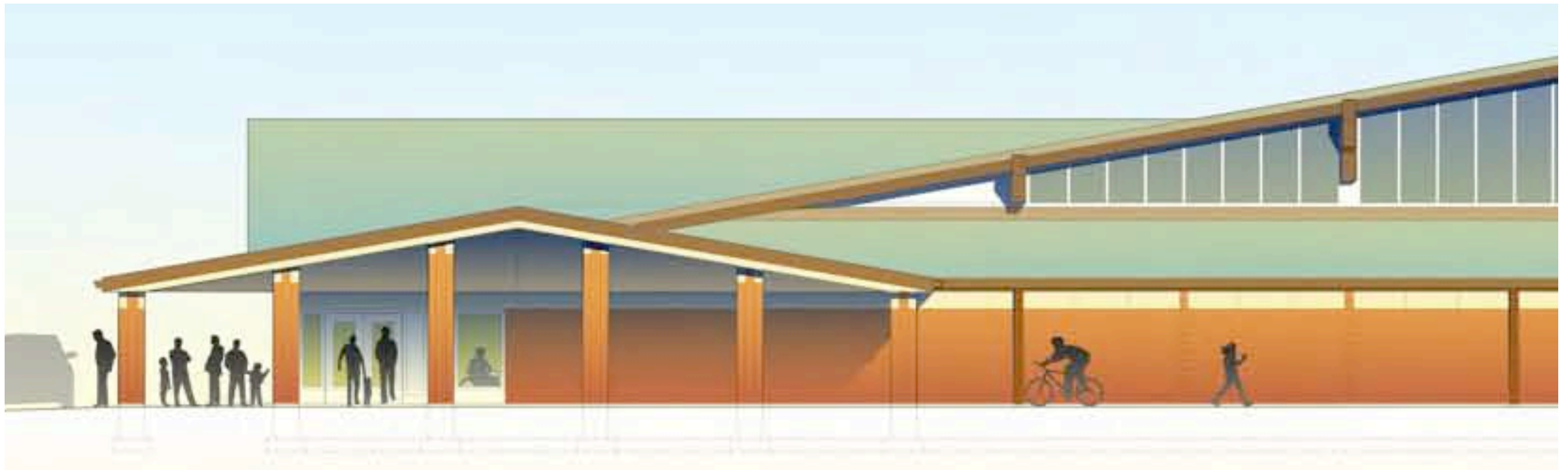
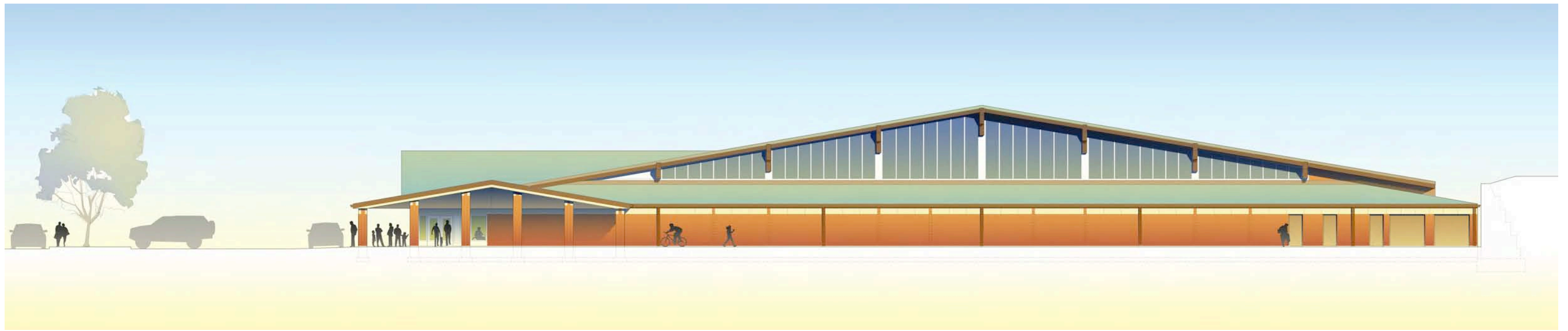


NORTH ELEVATION

Altamanu, Inc.
LANDSCAPE ARCHITECTURE

Stantec
AQUATICS & ICE CONSULTANTS

**nagle
hartray**
architecture

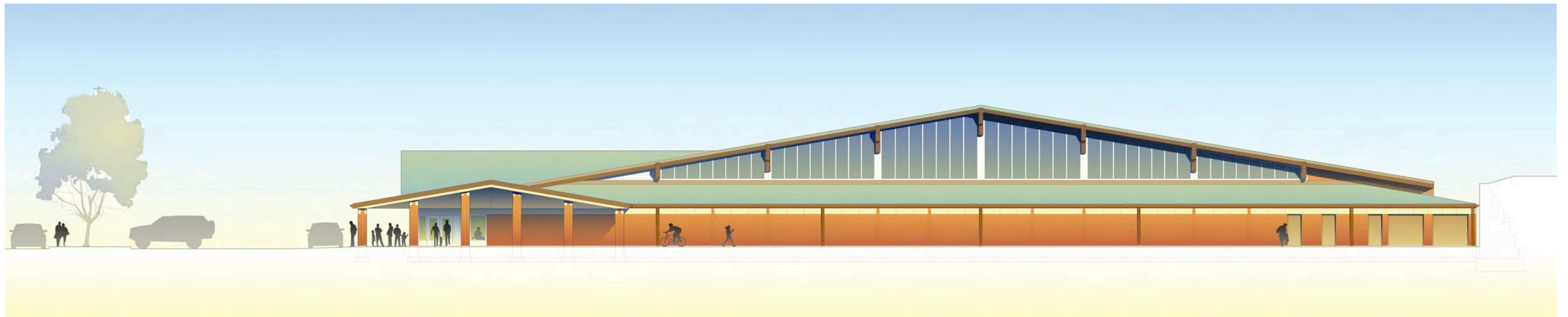


WEST ELEVATION

Altamanu, Inc.
LANDSCAPE ARCHITECTURE

Stantec
AQUATICS & ICE CONSULTANTS

**nagle
hartray**
architecture

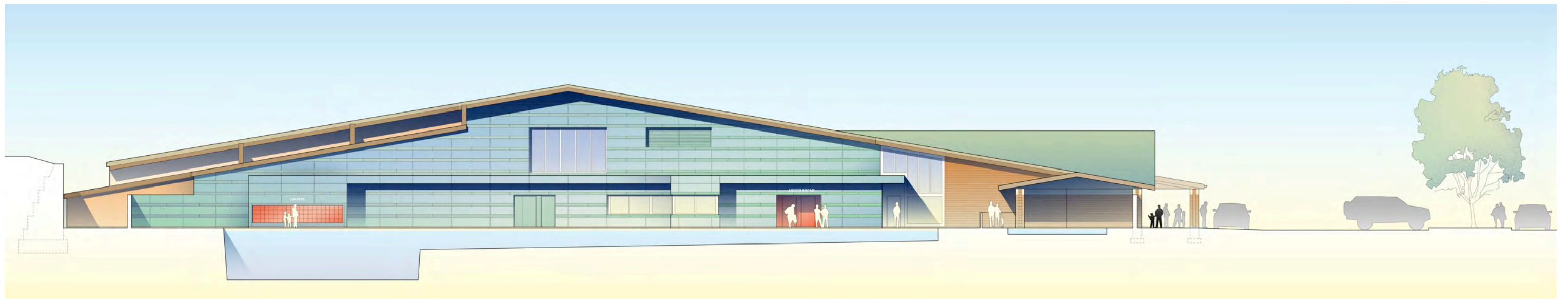


NORTH ELEVATION

Altamanu, Inc.
LANDSCAPE ARCHITECTURE

Stantec
AQUATICS & ICE CONSULTANTS

nagle
hartray
|architecture

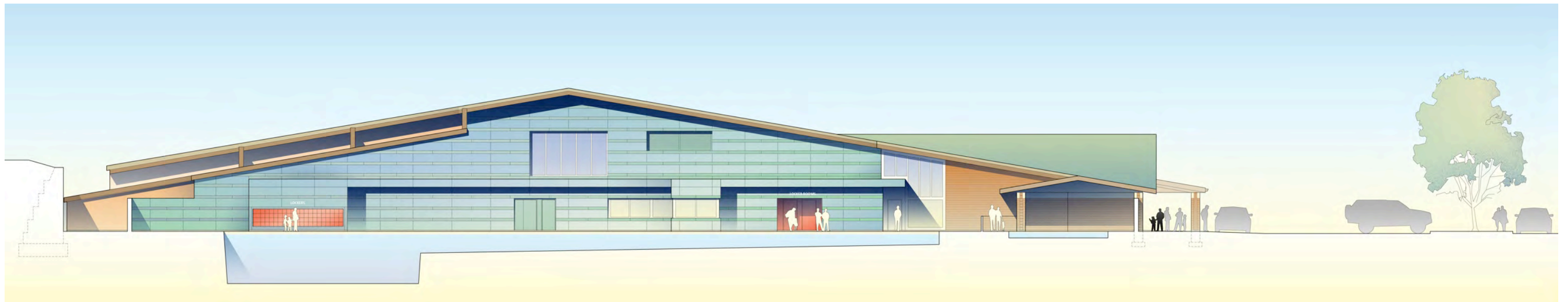


EAST ELEVATION

Altamanu, Inc.
LANDSCAPE ARCHITECTURE

Stantec
AQUATICS & ICE CONSULTANTS

nagle
hartray
|architecture



RIDGELAND & LAKE

Altamanu, Inc.
LANDSCAPE ARCHITECTURE

Stantec
AQUATICS & ICE CONSULTANTS

nagle
hartray
architecture

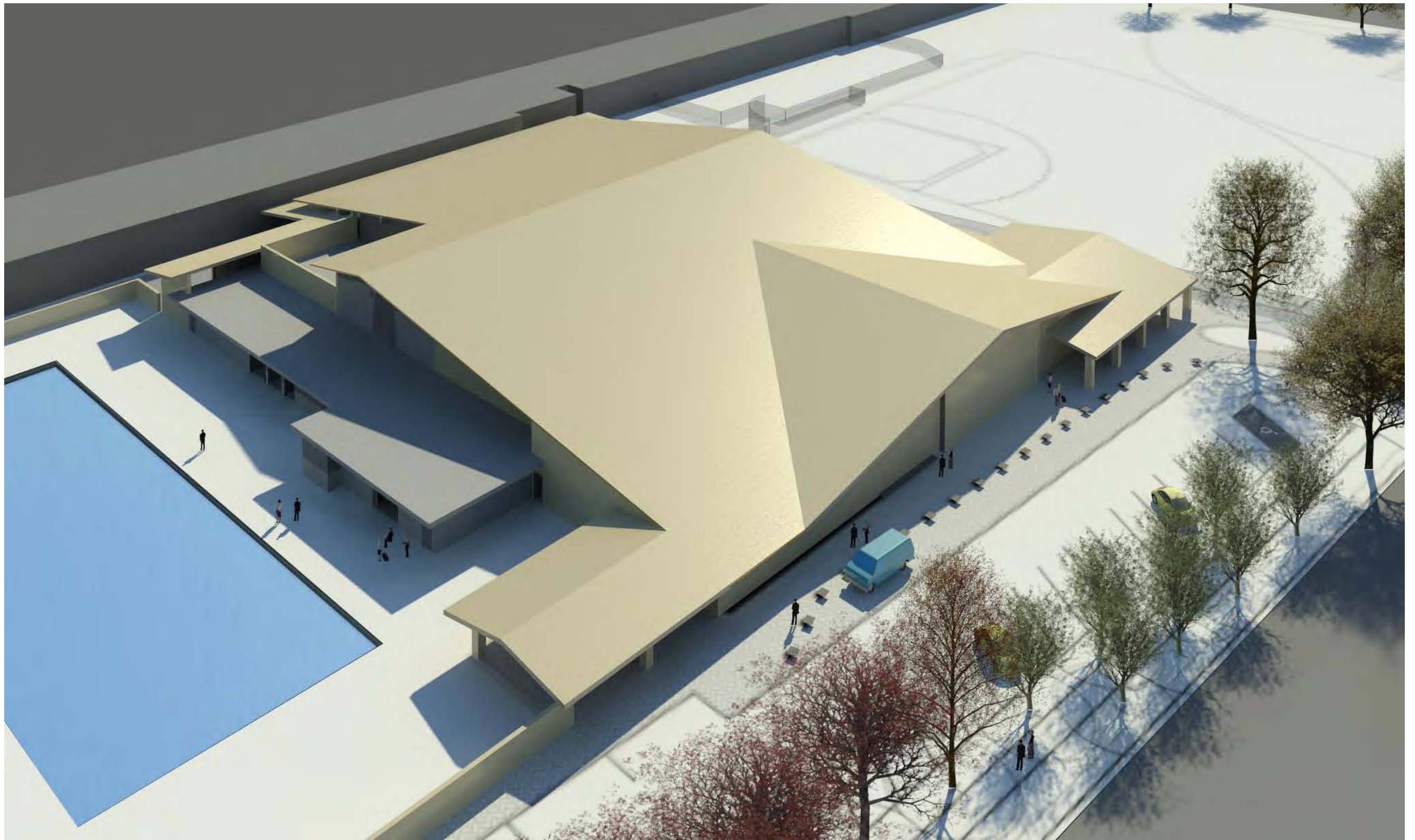


AERIAL

Altamanu, Inc.
LANDSCAPE ARCHITECTURE

Stantec
AQUATICS & ICE CONSULTANTS

nagle
hartray
|architecture



Altamanu, Inc.
LANDSCAPE ARCHITECTURE

Stantec
AQUATICS & ICE CONSULTANTS

**nagle
hartray**
| architecture

Next Steps

Hire & orient Owners Representative

Actively participate in schematic design review

Prepare a Transition Plan that strives to minimize the impact

Transition Plan will include:

Inventory and identify program & service disruptions

Communicate clear expectations to the public

Identify a range of relocation strategies

Consult with area providers

Establish a communication system

Arrange temporary re-location of programs & services

Provide information on alternate service venues