

COMMUNITY MEETING

14 November 2011



RIDGELAND COMMON PARK DISTRICT OF OAK PARK



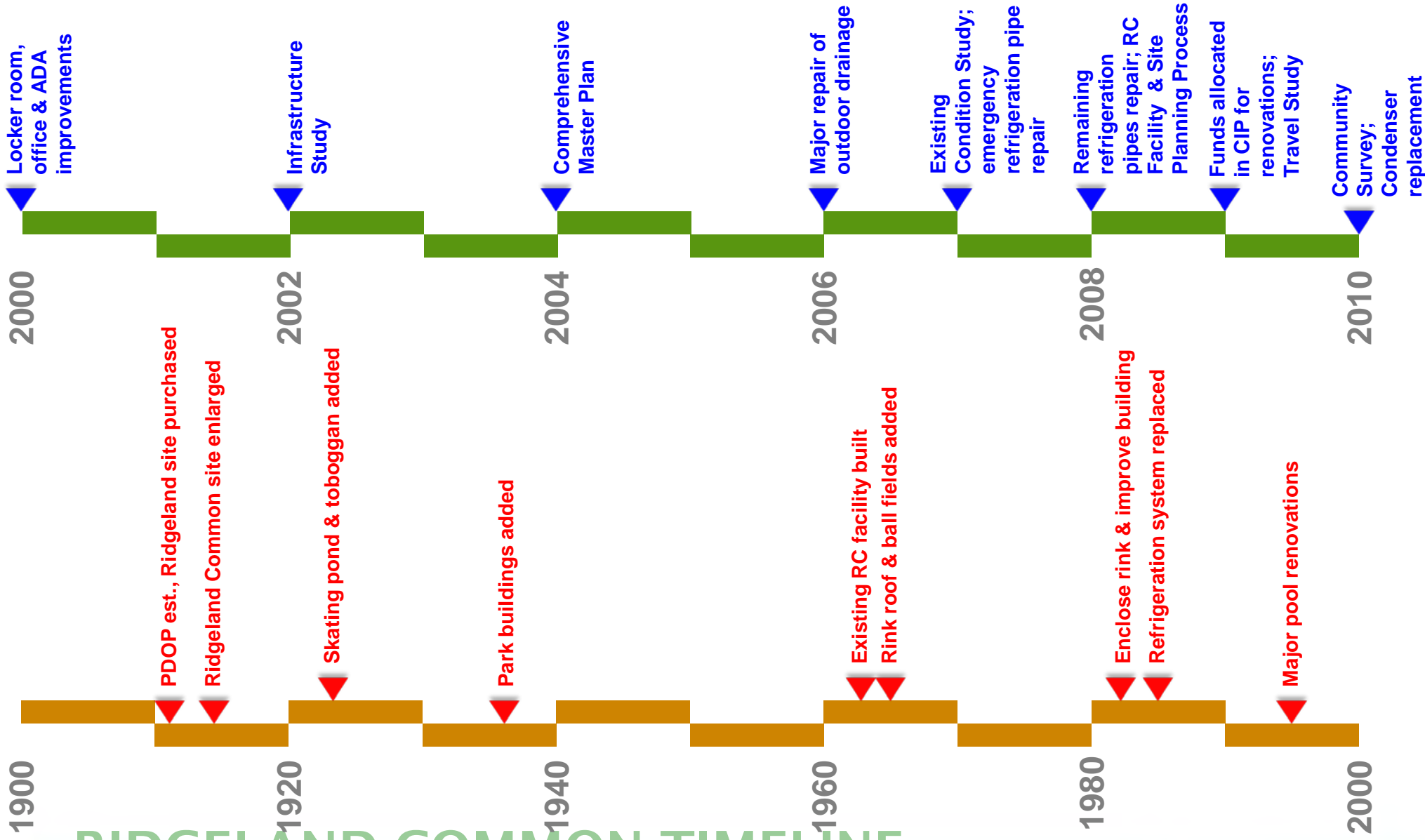
Altamanu Inc.

Bonestroo

TERRA
ENGINEERING LTD.

nagle
hartray
architecture

RIDGELAND COMMON TIMELINE



Altamanu Inc.

Bonestroo

TERRA ENGINEERING LTD.

nagle hartray architecture

Decisions to date

Reconstruction in lieu of new building

Project budget of \$23.5M

LEED certification

Program as illustrated in concept plans

Decisions to date

Reconstruction in lieu of new building

Project budget of \$23.5M

LEED certification




Program as illustrated in concept plans

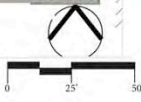
Purpose of this meeting

Inform the public of progress and plans

Gather information that will inform design of building and site



 Proposed Tree
  Existing Tree
  Proposed Field Light





SITE PLAN OPTION A



Altamanu Inc.

Bonestroo

TERRA
ENGINEERING LTD.

nagle
hartray
architecture



SITE PLAN OPTION B

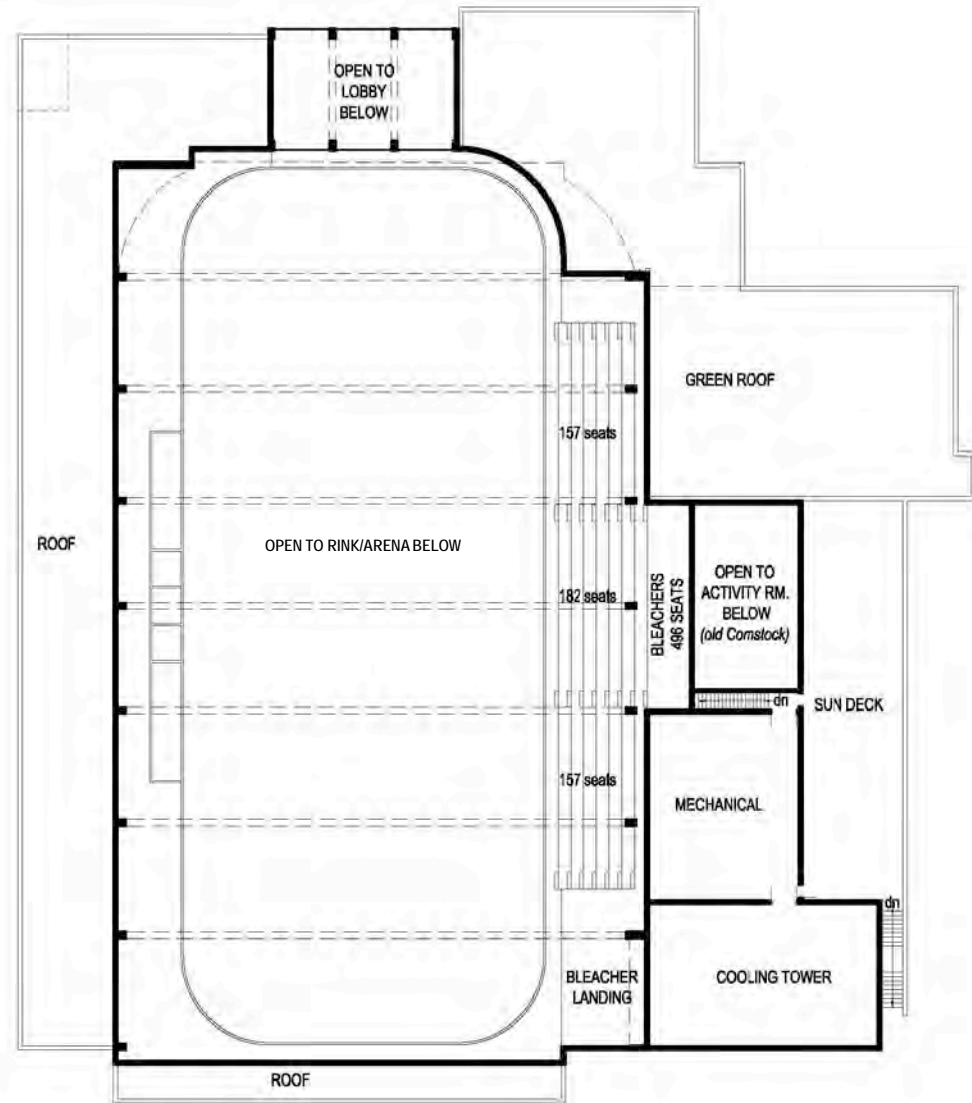
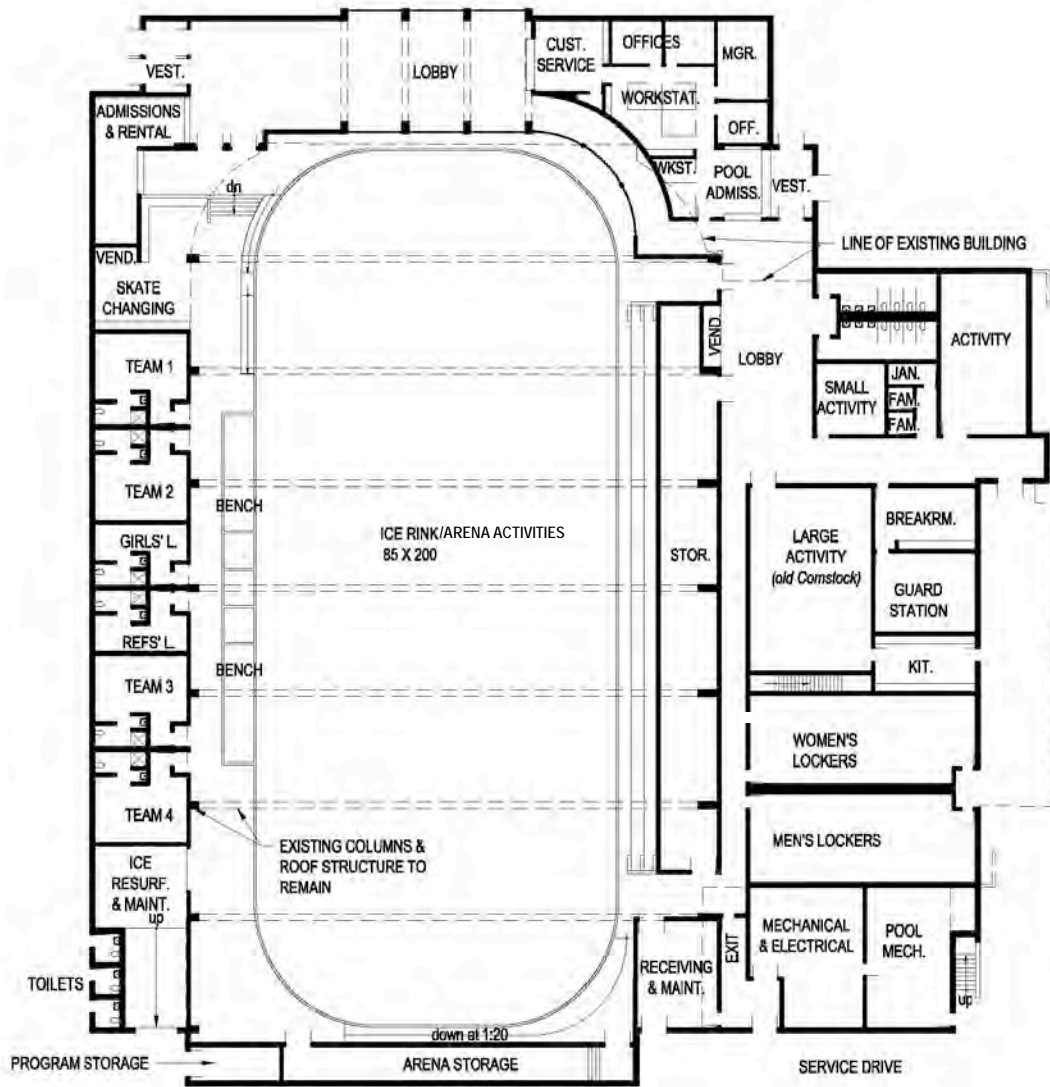


Altamanu Inc.

Bonestroo

TERRA ENGINEERING LTD.

nagle hartray architecture



CONCEPT FLOOR PLANS



Altamanu Inc.

Bonestroo

TERRA ENGINEERING LTD.

nagle hartray architecture



Home of the Champlin Park Rebels

EXAMPLE—LOBBY TO ICE RELATIONSHIP



Altamanu Inc.

Bonestroo

TERRA
ENGINEERING LTD.

nagle
hartray
architecture



EXAMPLE—BLEACHERS TO ICE RELATIONSHIP

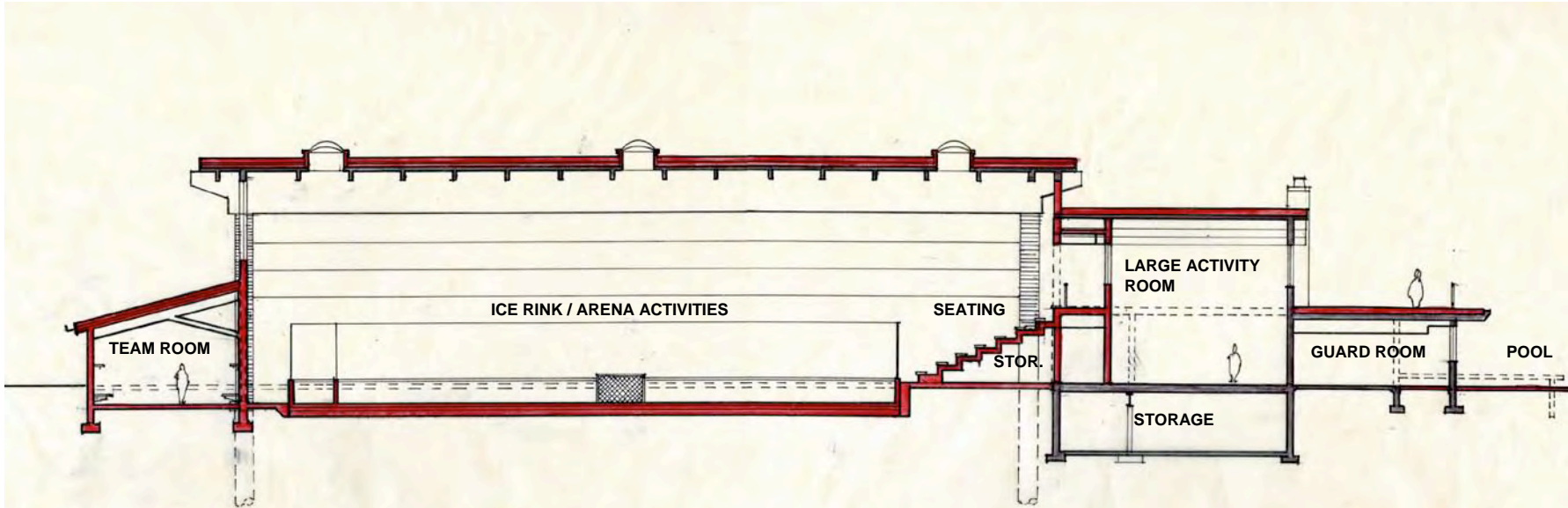


Altamanu Inc.

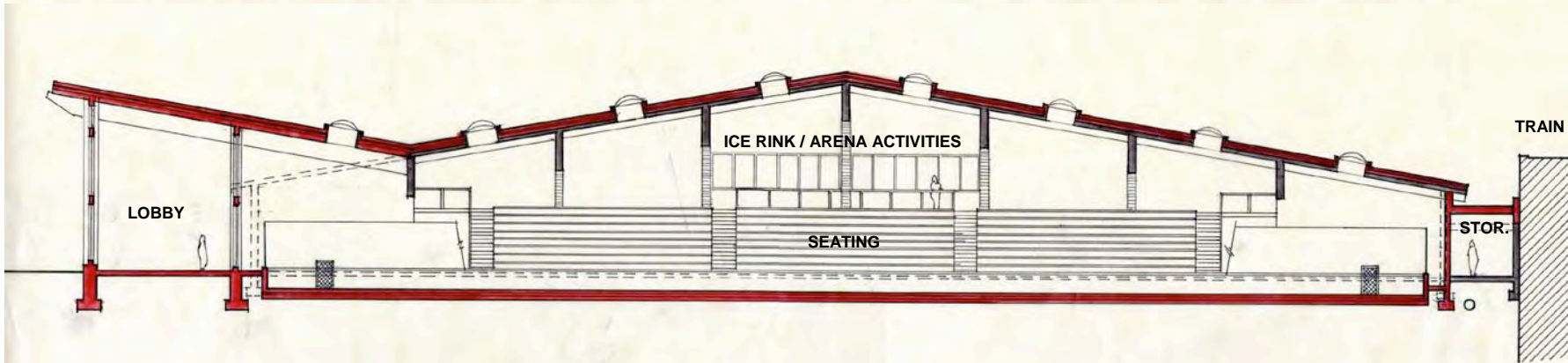
Bonestroo

TERRA
ENGINEERING LTD.

nagle
hartray
architecture

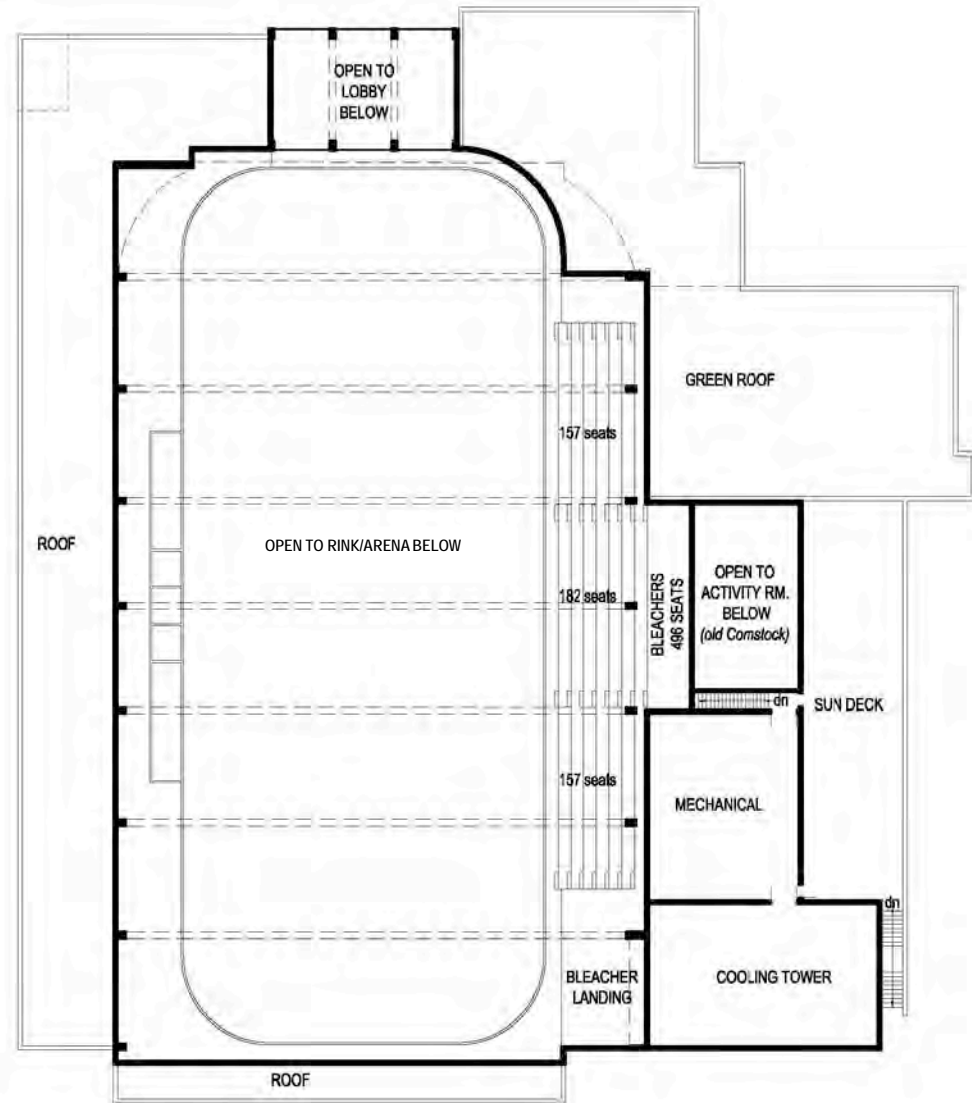
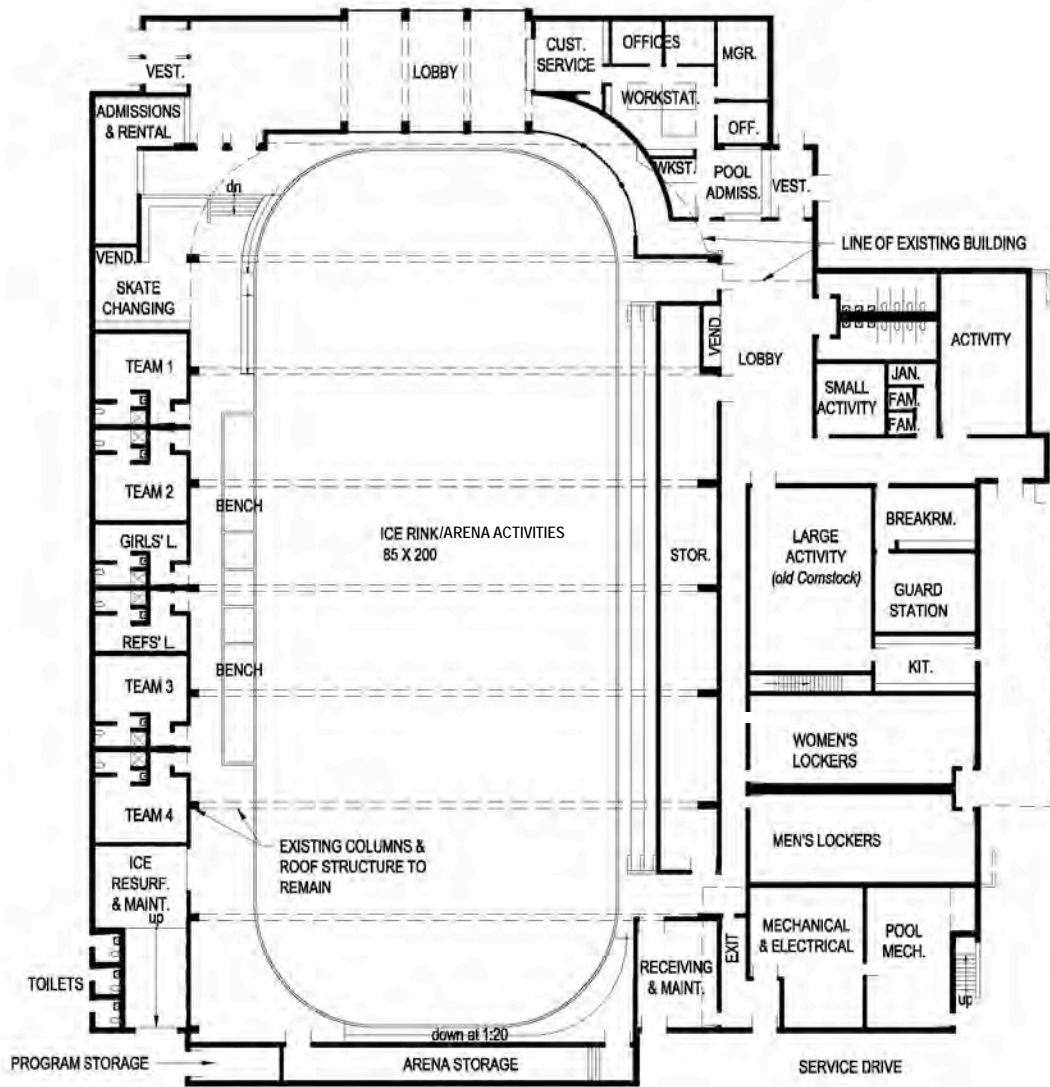


CROSS SECTION – LOOKING NORTH



LONGITUDINAL SECTION – LOOKING EAST

CONCEPT BUILDING SECTIONS



CONCEPT FLOOR PLANS



Altamanu Inc.

Bonestroo

TERRA ENGINEERING LTD.

nagle hartray architecture



Francisco Terrace



OPRF High School



Pilgrim Congregational Church



High School Stadium



Apartments

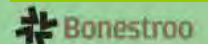


Prairie Court Apartments

LAKE STREET CONTEXT



Altamanu Inc.



nagle
hartray
architecture