



REHM PARK

PARK DISTRICT OF OAK PARK



Visual linkage between Rehm Park and Conservatory

Pedestrian Plaza
• consider developing a new pedestrian plaza area



Service/Storage Area
• screen area from park
• discourage use by park users

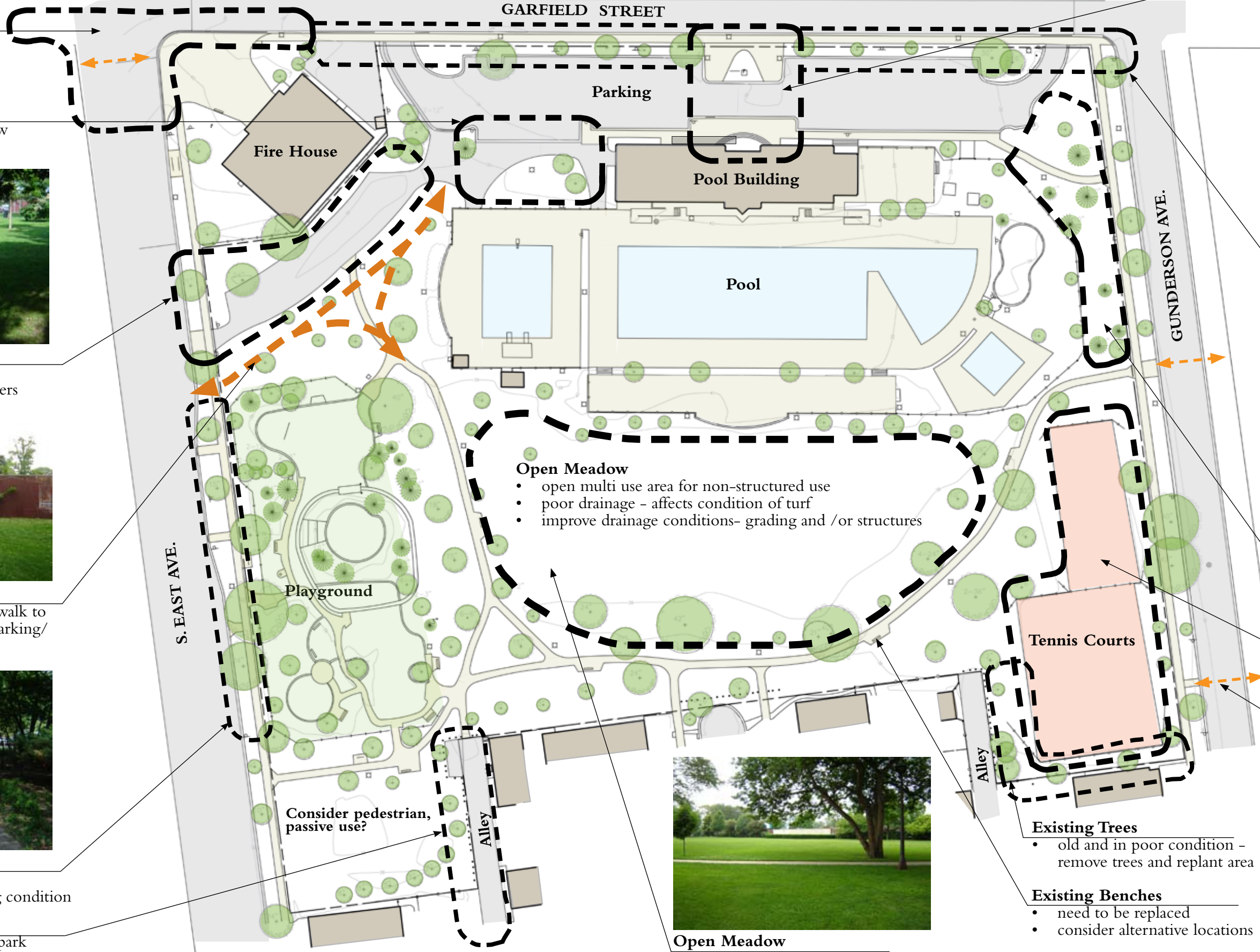


Walk Linkage
• consider new pedestrian walk to provide better access to parking/street/park



Planting Area
• extreme shade
• need to improve planting condition

Alley Area
• consider screening from park



Pool Entrance



- improve entrance to building and paved surface
- identify as significant entry
- improve safety and access
- minimize drop off / parking conflict

Garfield Street



- potential for streetscape/ landscape treatments - paving, landscape, lighting, banners

Planting Beds

- difficult to maintain - replant to minimize maintenance

Tennis Court

- courts in good condition
- Are three courts necessary?

Cross Walks needs to be designated

Open Meadow

- open multi use area for non-structured use
- poor drainage - affects condition of turf
- improve drainage conditions- grading and /or structures



Open Meadow

Existing Trees

- old and in poor condition - remove trees and replant area

Existing Benches

- need to be replaced
- consider alternative locations

SITE DATA:	
Total Site Area:	6.2 Ac
Pool Area:	1.5 Ac (24%)
Parking:	0.6 Ac (10%)
Tennis Courts:	0.4 Ac (6%)
Playground:	0.6 Ac (10%)
Walks:	0.14 Ac (2%)

