

Paving

- Re-lay pavers at entrances to bring level with adjacent concrete.
- Top-dress gravel path with specially-sourced gravel.
- Install gravel path along route of "desire path" thru woodland.
- Power wash existing concrete pavement.
- Remove "grass-crete" path/drive, replace with interlocking pavers to match other pedestrian entrances. Re-align paths to address new comfort station.

Low loop fence

New gravel path

Re-surfaced existing path

Existing concrete paver walk, re-set as needed

Existing concrete pavement

Arboretum

Goal: Encompass majority of commemorative trees. Improve organization and arrangement of trees; limit scope of commemorative trees to adhere to directives of master planting plan.

First phase: Remove declining/inferior trees/shrubs. Begin to organize plantings according to master planting plan by transplanting smaller trees.

Second phase: Remove select trees/shrubs. Add trees and shrubs according to master planting plan.

Requires moderate maintenance during establishment: weed control, irrigation, select pruning, mulching. Limited professional oversight advised in the long term to ensure integrity of planting.

Event Lawn

Goal: Preserve large open grassy lawn for events.

Improve quality of turf to withstand heavy usage during theater and art fair events. Over-seed thin or bare areas as necessary to improve turf density. Maintain clear cultivated turf edge.

Utilize relative low point for ice skating.

Add "tea house" for small concerts, readings, photo opportunities. Structure to complement existing park structure.

Requires moderate maintenance during growing season: mowing, fertilization, weed control, irrigation. Limited professional oversight advised in the long term to ensure integrity of turf.

Site Furnishings and Fencing

- Remove benches from most secluded sites. Replace all benches in phases to improve appearance and comfort and to locate off path.
- Install additional area lighting along path. Change heads on existing units to reduce unpleasant glare.
- Replace chainlink and wood fencing along southern and western borders with new cor-ten to match existing along east and north sides. Add quick-couplers throughout site for hand-irrigation.

Garage

- Remove junk; relocate non site-specific storage to other sites.
- Repair roof, siding, doors as needed. Weatherize structure (though to remain unheated).
- Remodel interior to accommodate interpretive elements related to the natural and cultural history of the park, as well as for very limited event-related storage. Building can also serve as shelter.
- Add lighting, outlets, security system. Consider installing utility sink and drain connection to sewer.

South Entrance Garden

Goal: Re-configure pedestrian entrance to park, diminish importance of vehicular entrance. Rehabilitate and enrich plantings, replace site furnishings to create a more coherent garden space.

More attention to detail: diverse plantings with trees, shrubs, groundcovers, and flowers. Up-graded paving and site furnishings.

Requires moderately-high maintenance during establishment and growing season: weed control, irrigation, select pruning, mulching. Limited professional oversight advised in the long term to ensure integrity of planting.

Ornamental Woodland Planting

Goal: create a native woodland/savannah planting. Manage planting to create a diverse, fairly self-sustaining "layered" planting - overstory, understorey, shrubs, and ground level vegetation.

Requires moderate maintenance during establishment: weed control, irrigation, select pruning, mulching. Limited professional oversight advised in the long term to ensure integrity of planting.

Use a native plant palette, though selected exotics might be retained.

First phase: remove woody and herbaceous weeds by digging and herbiciding. Accelerate removal of Norway Maples. Install leaf mold and shredded wood mulch.

Second phase: Complete removal of Norway Maples. Begin addition of understorey trees and ground plane planting according to master planting plan. Continue leaf mold replenishment.

Third phase: Complete addition of understorey trees and ground plane planting according to master planting plan. Continue leaf mold replenishment.

Woodland Wildflower Garden

New

Goal: Preserve, enhance, and defend existing native wildflower planting. Extend planting to east. Establish funding, management protocols to maintain quality of planting and interpretation.

Requires a moderate level of informed maintenance during growing season: weed control, irrigation, mulching.

Limited professional oversight advised in the long term to ensure integrity of planting.

Existing

Park district staff to coordinate and oversee maintenance and planting efforts by volunteers.

Continued efforts by volunteers to monitor condition of plantings. Assist in expansion of planting.

Collaboration by volunteers and Park District to design and locate interpretive signage.

Add selected understorey trees and shrubs for multi-season interest and to tie into Woodland Planting.

Add simple, low hoop fencing along paths to help defend plantings.

Buffer Planting

Goal: Buffer park from effects of alley, parking lots, street thru mixed plantings of evergreens and shrubs.

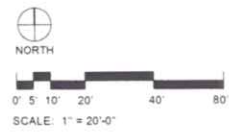
Requires moderate maintenance during establishment: weed control, irrigation, select pruning, mulching. Limited professional oversight advised in the long term to ensure integrity of planting.

Existing vehicular and pedestrian gate to remain locked - use restricted to special park maintenance.

Existing pedestrian gate to become main access point at southeast corner.

Remove exist walk, install new walk in new configuration.

Relocate existing mailbox away from entrance.



Paving

Re-lay pavers at entrances to bring level with adjacent concrete.
Top-dress gravel path with specially-sourced gravel.
Install gravel path along route of "desire path" thru woodland.
Power wash existing concrete pavement.
Remove "grass-crete" path/drive, replace with interlocking pavers to match other pedestrian entrances. Re-align paths to address new comfort station.

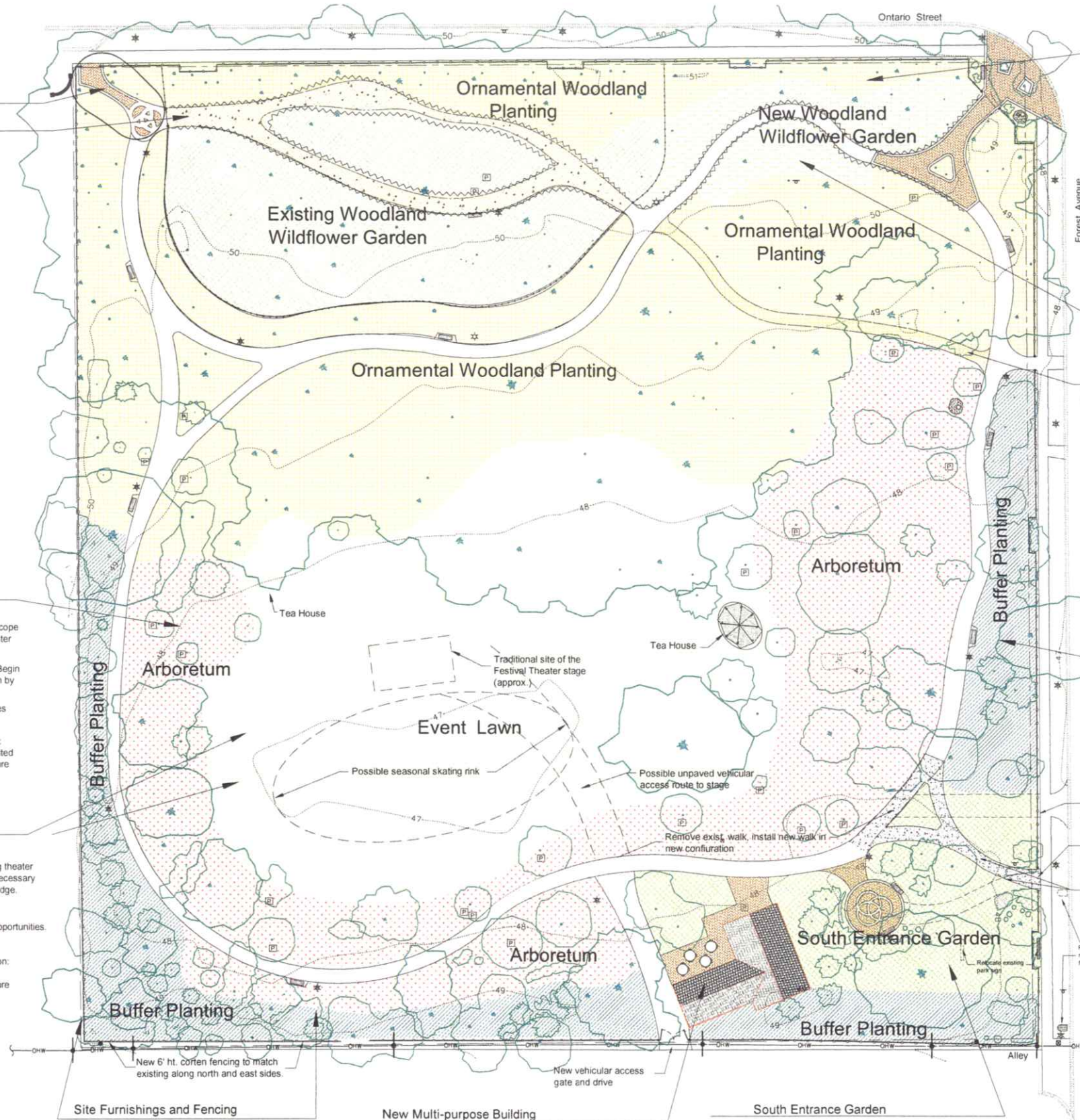
- Low loop fence
- New gravel path
- Re-surfaced existing path
- Existing concrete paver walk, re-set as needed
- Existing concrete pavement

Arboretum

Goal: Encompass majority of commemorative trees. Improve organization and arrangement of trees; limit scope of commemorative trees to adhere to directives of master planting plan.
First phase: Remove declining/inferior trees/shrubs. Begin to organize plantings according to master planting plan by transplanting smaller trees.
Second phase: Remove select trees/shrubs. Add trees and shrubs according to master planting plan.
Requires moderate maintenance during establishment: weed control, irrigation, select pruning, mulching. Limited professional oversight advised in the long term to ensure integrity of planting.

Event Lawn

Goal: Preserve large open grassy lawn for events. Improve quality of turf to withstand heavy usage during theater and art fair events. Over-seed thin or bare areas as necessary to improve turf density. Maintain clear cultivated turf edge.
Utilize relative low point for ice skating.
Add "tea house" for small concerts, readings, photo opportunities. Structure to complement existing park structure.
Requires moderate maintenance during growing season: mowing, fertilization, weed control, irrigation. Limited professional oversight advised in the long term to ensure integrity of turf.



Ornamental Woodland Planting

Goal: create a native woodland/savannah planting. Manage planting to create a diverse, fairly self-sustaining "layered" planting - overstory, understory, shrubs, and ground level vegetation.
Requires moderate maintenance during establishment: weed control, irrigation, select pruning, mulching. Limited professional oversight advised in the long term to ensure integrity of planting.
Use a native plant palette, though selected exotics might be retained.
First phase: remove woody and herbaceous weeds by digging and herbiciding. Accelerate removal of Norway Maples. Install leaf mold and shredded wood mulch.
Second phase: Complete removal of Norway Maples. Begin addition of understory trees and ground plane planting according to master planting plan. Continue leaf mold replenishment.
Third phase: Complete addition of understory trees and ground plane planting according to master planting plan. Continue leaf mold replenishment.

Woodland Wildflower Garden

New
Goal: Preserve, enhance, and defend existing native wildflower planting. Extend planting to east. Establish funding, management protocols to maintain quality of planting and interpretation.
Requires a moderate level of informed maintenance during growing season: weed control, irrigation, mulching.
Limited professional oversight advised in the long term to ensure integrity of planting.
Existing
Park district staff to coordinate and oversee maintenance and planting efforts by volunteers.
Continued efforts by volunteers to monitor condition of plantings. Assist in expansion of planting.
Collaboration by volunteers and Park District to design and locate interpretive signage.
Add selected understory trees and shrubs for multi-season interest and to tie into Woodland Planting.
Add simple, low hoop fencing along paths to help defend plantings.

Buffer Planting

Goal: Buffer park from effects of alley, parking lots, street thru mixed plantings of evergreens and shrubs.
Requires moderate maintenance during establishment: weed control, irrigation, select pruning, mulching. Limited professional oversight advised in the long term to ensure integrity of planting.

Site Furnishings and Fencing

Remove benches from most secluded sites. Replace all benches in phases to improve appearance and comfort and to locate off path.
Install additional area lighting along path. Change heads on existing units to reduce unpleasant glare.
Replace chainlink and wood fencing along southern and western borders with new cor-ten to match existing along east and north sides.
Add quick-couplers throughout site for hand-irrigation.

New Multi-purpose Building






Relocate or demolish existing garage.
New multi-purpose building to house interpretive elements related to the natural and cultural history of the park, public restrooms, and limited event-related storage. Space for seasonal or event-related concessions also possible. Building can also serve as shelter. Building to have electrical, plumbing, and heating for year-round use.
Additional paving would permit seating for picnics, craft events.

South Entrance Garden

Goal: Re-configure pedestrian entrance to park, relate circulation patterns to new building. Rehabilitate and enrich plantings, replace site furnishings to create a more coherent garden space.
More attention to detail: diverse plantings with trees, shrubs, groundcovers, and flowers. Up-graded paving and site furnishings.
Requires moderately-high maintenance during establishment and growing season: weed control, irrigation, select pruning, mulching. Limited professional oversight advised in the long term to ensure integrity of planting.

Paving

Re-lay pavers at entrances to bring level with adjacent concrete.
 Top-dress gravel path with specially-sourced gravel.
 Install gravel path along route of "desire path" thru woodland.
 Power wash existing concrete pavement.
 Remove "grass-crete" path/drive, replace with interlocking pavers to match other pedestrian entrances. Re-align paths to address new comfort station.

-  Low loop fence
-  New gravel path
-  Re-surfaced existing path
-  Existing concrete paver walk, re-set as needed
-  Existing concrete pavement

Arboretum

Goal: Encompass majority of commemorative trees. Improve organization and arrangement of trees; limit scope of commemorative trees to adhere to directives of master planting plan.
 First phase: Remove declining/inferior trees/shrubs. Begin to organize plantings according to master planting plan by transplanting smaller trees.
 Second phase: Remove select trees/shrubs. Add trees and shrubs according to master planting plan.
 Requires moderate maintenance during establishment: weed control, irrigation, select pruning, mulching. Limited professional oversight advised in the long term to ensure integrity of planting.

Event Lawn

Goal: Preserve large open grassy lawn for events.
 Improve quality of turf to withstand heavy usage during theater and art fair events. Over-seed thin or bare areas as necessary to improve turf density. Maintain clear cultivated turf edge.
 Utilize relative low point for ice skating.
 Add "tea house" for small concerts, readings, photo opportunities. Structure to complement existing park structure.
 Requires moderate maintenance during growing season: mowing, fertilization, weed control, irrigation. Limited professional oversight advised in the long term to ensure integrity of turf.



Ornamental Woodland Planting

Goal: create a native woodland/savannah planting. Manage planting to create a diverse, fairly self-sustaining "layered" planting - overstory, understory, shrubs, and ground level vegetation.
 Requires moderate maintenance during establishment: weed control, irrigation, select pruning, mulching. Limited professional oversight advised in the long term to ensure integrity of planting.
 Use a native plant palette, though selected exotics might be retained.
 First phase: remove woody and herbaceous weeds by digging and herbiciding. Accelerate removal of Norway Maples. Install leaf mold and shredded wood mulch.
 Second phase: Complete removal of Norway Maples. Begin addition of understory trees and ground plane planting according to master planting plan. Continue leaf mold replenishment.
 Third phase: Complete addition of understory trees and ground plane planting according to master planting plan. Continue leaf mold replenishment.

Woodland Wildflower Garden

New
 Goal: Preserve, enhance, and defend existing native wildflower planting. Extend planting to east. Establish funding, management protocols to maintain quality of planting and interpretation.
 Requires a moderate level of informed maintenance during growing season: weed control, irrigation, mulching.
 Limited professional oversight advised in the long term to ensure integrity of planting.
Existing
 Park district staff to coordinate and oversee maintenance and planting efforts by volunteers.
 Continued efforts by volunteers to monitor condition of plantings. Assist in expansion of planting.
 Collaboration by volunteers and Park District to design and locate interpretive signage.
 Add selected understory trees and shrubs for multi-season interest and to tie into Woodland Planting.
 Add simple, low hoop fencing along paths to help defend plantings.

New Restroom Building

New building to house accessible public restrooms. Also could house ticket room or dressing room(s) for Festival Theater or other events. Location near street makes building visible and accessible from major pedestrian routes, as well as enabling easier sewer and water connections. Location would also make surveillance easier. Style to complement existing garage.

South Entrance Garden

Goal: Re-configure pedestrian entrance to park and address new building entrance. Rehabilitate and enrich plantings, replace site furnishings to create a more coherent garden space.
 More attention to detail: diverse plantings with trees, shrubs, groundcovers, and flowers. Up-graded paving and site furnishings.
 Requires moderately-high maintenance during establishment and growing season: weed control, irrigation, select pruning, mulching. Limited professional oversight advised in the long term to ensure integrity of planting.

Site Furnishings and Fencing

Remove benches from most secluded sites. Replace all benches in phases to improve appearance and comfort and to locate off path.
 Install additional area lighting along path. Change heads on existing units to reduce unpleasant glare.
 Replace chainlink and wood fencing along southern and western borders with new cor-ten to match existing along east and north sides.
 Add quick-couplers throughout site for hand-irrigation.

Garage

Remove junk; relocate non site-specific storage to other sites.
 Repair roof, siding, doors as needed. Weatherize structure (though to remain unheated).
 Remodel interior to accommodate interpretive elements related to the natural and cultural history of the park, as well as for very limited event-related storage. Building can also serve as shelter.
 Add lighting, outlets, security system. Consider installing utility sink and drain connection to sewer.

Buffer Planting

Goal: Buffer park from effects of alley, parking lots, street thru mixed plantings of evergreens and shrubs.
 Requires moderate maintenance during establishment: weed control, irrigation, select pruning, mulching. Limited professional oversight advised in the long term to ensure integrity of planting.

